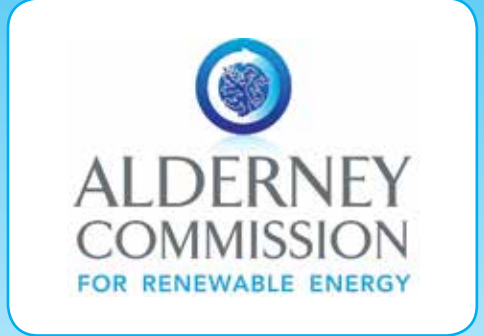




© Sam Cundy



The Commission was established by the Renewable Energy (Alderney) Law 2007 and its related Ordinances. These set out the statutory role and responsibilities of the Commission and the requirements that the Commission must ensure are fulfilled in order to comply with the Law and its subsequent amendment in 2011.

In order to operate effectively in carrying out this role the Commission shall

- operate in an impartial efficient and professional regime to regulate renewable energy production,
- ensure that at all times it operates in accordance with current best practice,
- brief the current Alderney Government in order that informed decisions may be made in developing any renewable energy resources on Alderney and in its territorial waters,
- support wherever possible the development of domestic renewable initiatives on Alderney, even if they are not required to be regulated by the Commission,
- work with the other Channel Islands, France and the UK to develop the renewable energy resources.

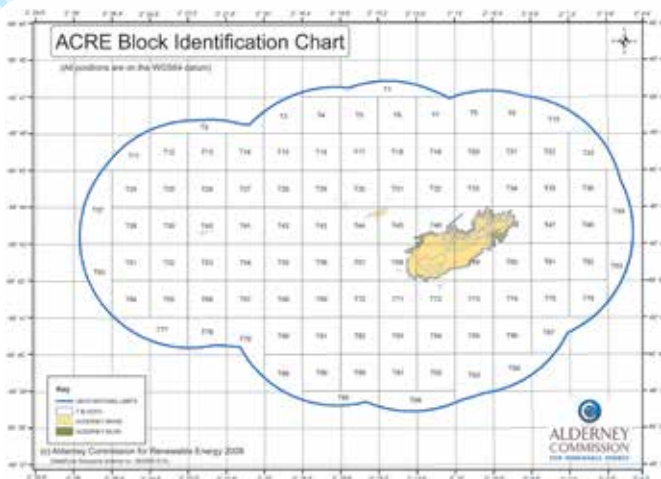
The Commission is responsible for licensing and regulating the operation, deployment, use or management of all forms of renewable energy in the island of Alderney and its territorial waters.

Alderney is surrounded by some of the potentially most productive tides in Europe.

The Alderney Race lies to the south and east of the island and the Swinge to the north.

The island owns the seabed out to three nautical miles from its baselines, covering over

90 nm² of accessible tidal flow. Independent estimates of the energy that could be harvested from tidal flows within the three nautical mile limit using current technology range from 1GW to 3GW. For licensing and development of the resource, Alderney's waters are divided into blocks 1nm².



Current activities include:

Monitoring the activities of developers to ensure compliance with their license.

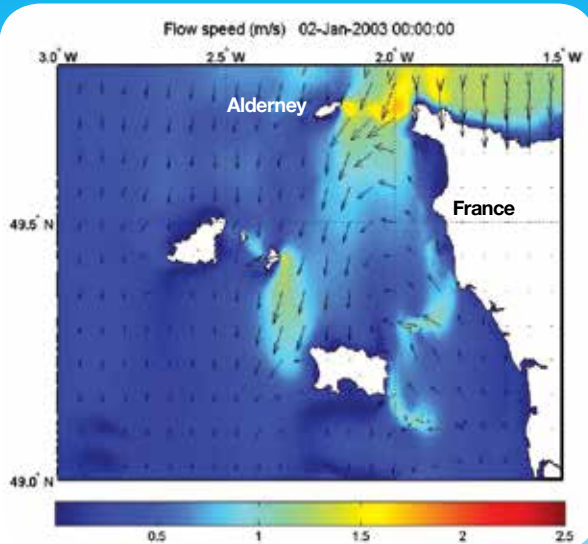
Facilitating the marine and land based Consent processes by developing clear, unambiguous guidance for developers to ensure compliance with local legislation and best practice.

Progressing environmental baseline and research studies to inform the Commission, and expedite development on the island and in territorial waters.

Promoting a Channel Islands approach to seeking access to UK and European markets and subsidies.

Working with neighbouring jurisdictions to progress and co-ordinate consenting arrangements to resolve environmental, shipping and fishing issues in adjacent sea areas.

Investigating other renewable energy sources in addition to tidal power, including onshore renewable energy systems, with the ambition of decreasing Alderney's dependence on diesel generated electricity.

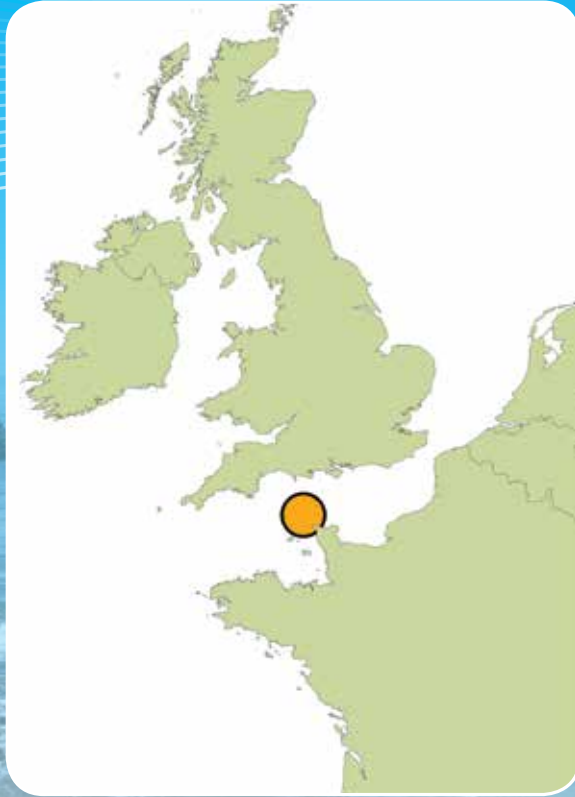


The focus at present is on the exploitation of the island's tidal resource. By 2020, it is envisaged that an interconnector will run from France, Alderney and Britain (known as the FAB Link project) to enable tidal energy to be exported from Alderney by the developer, ARE Limited.

The Commission's Regulatory Framework is reviewed regularly to ensure it encompasses best practice from both the UK and EU within this evolving sector of Marine Renewables.

The Commission's licensing process involves a comprehensive examination of an applicant's technical and financial proposal.

The consents process is robust, transparent and straightforward. It is a two stage process, phase 1 being the grant of a Licence to conduct preparatory tidal surveys and other investigations over a concession covering a number of blocks, and phase 2 being the individual Operating Consent to develop each block within that concession. Guides to the Marine Consenting Process and Decommissioning and Health and Safety requirements are available to download from the Commission's website.



CONTACT ADDRESS

Alderney Commission for Renewable Energy

PO Box 1084, Alderney, Channel Islands
GY9 3LL

© Copyright Alderney Commission for Renewable Energy 2014.
All Rights Reserved.

Telephone and Fax: **+44(0)1481 822357**

Email: **info@acre.gg**